

# Used machines offer

## CJS DI - Compact Jet Sweeper / De Icer

Offer number: UM0012718

 **aebi schmidt**  
group

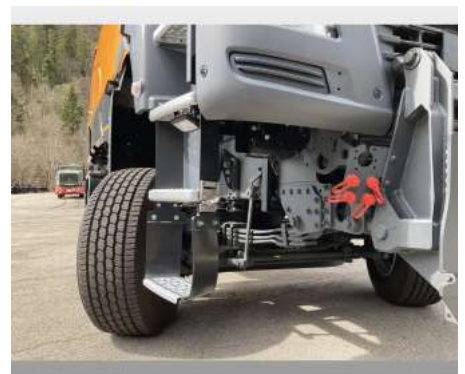


Brand: Schmidt  
Mat.-Nr.: 1336640-3  
Year of manufacture: 07/2021  
Serialnumber: WMA03SZZ4MM885972  
Running hours: 18 h  
Mileage: 150 km  
Condition: Class 5  
Location: Germany  
79837 St. Blasien

Price: **On request**

The condition of the shown machine will be as good as new with low utilization. It got used for demo purposes. A snow plough unit, which will fit to the machine, can offered in addition.

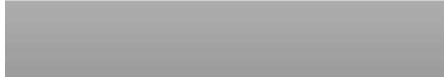
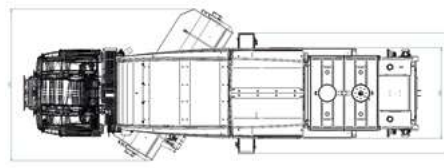
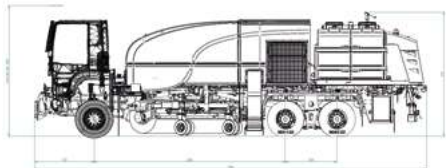
### Gallery











## Equipment

### CJS DI Carrier Vehicle

Manufacturer	MAN
Type	TGS 18.330,4x2 ,BB ,6300 mm, Euro6 d, LH drive
Shifting	MAN TipMatic
Cabin	Air condition, MAN media system, radio preparation
Elektric	Battery main
Lighting	2x beacon lights, winter service lighting system
Add. Options	2x choks, jack, spare wheel 385/65R22.5 ( Michelin LENK-WINTER )

### CJS DI Superstructure

711097	CJS-DI with aux. engine Euromot 5 for MAN TGS 18.360
<b>Vehicle</b>	
305229	Steerable rear axle
224046	Auxilliary engine MB OM936 LA, Euromot 5, 260kW / 354 HP
662496	Front mounting plate DIN 15432, model F1C (equivalent to size 5, DIN 76060)
770821	Cold package, cooling water preheater veh.engine & aux.engine, hydr. tank heating
586388	Battery charger
519009	Tow unit at rear truck end
492395	Design Upgrade Engine Hood CJS
<b>Cabin</b>	
483017	Vehicle hydraulic, additional parts for snow plough MS 56-A
<b>Clearing unit</b>	
519587	Cassette system - Polypropylene brush, 21 pieces, diameter 914mm/ 36"
<b>Paintwork</b>	
304630	Standard paint (upper part RAL 2011, lower part RAL7021)
808158	Elaskon preservation chassis
834646	Complete Contour Marking
<b>Other extras</b>	
107092	Marking lights for outer left & right side of brush
376820	Additional LED working light below windscreen
631707	Additional rear working light at driver`s cab for brush illumination
277488	Hella LED beacon
760973	Wear-dependant brush speed control
303171	Rear view camera in color, displayed on monitor
324680	Wheels complete with tyres 385/65R22,5 incl. rim
337905	Telematics - Modem kit and 1 year IntelliOPS standard
115981	Central lubrication system for CJS/ CJS-DI
<b>CJS DI Spreader</b>	
265718	Spreader STRATOS B 30 (24) steel
<b>Hopper</b>	
492275	Conveyor belt system („B“)
720749	Salt screen on the hopper 40x40 mm, stainless steel (for B25-30)
316434	Hopper cover Profi, stainless steel
707146	Hopper paint finish in orange RAL2011
500713	Ladder made of stainless steel instead of steel
<b>Pre-wet system</b>	
938002	Pre-wet system, 1270 Liter
171572	Pre-wet system EN15597-1, min. & max. level & scale for liquid level
912321	Pre-wet coupling Storz 2"
388150	Maximum level switch 4P
991673	Non return valve at filling connection
536469	Minimum level switch
<b>Drive system</b>	
632887	Machine powered by vehicle`s hydraulic system „V“
619528	Hydr. couplings flat-face leakfree, ISO16028, P=Size2(M) R=Size3(M)
<b>Control system</b>	
657333	Combi control system „ES“ Evolution Smart, with colour touchscreen
673710	Combi „percentage control“
271071	ThermoLogic, road temperature dependent dosage control (for ES), rear mounted
423554	Cable extension (cabin wall connector), standard version
763570	Control box support, universal version
<b>Distribution system</b>	
935026	Premium spreading disc „660“ FS50, spreading width 3 - 12 m, 2- 8 m FS50
438459	Rear working lamp, LED light, for spreading control (red or white)
224403	Kick back collision protection on spreading disc with feedback in control EP/ES
<b>Demount and fixing</b>	

660346	Basic framework suitable for demount legs till 12t or for fixed chassis mounting
977319	Demounting legs (4 pc.) 3 t. capacity, with spindle in middle, incl. side bars
919749	Beacon 1 pc. with LED light, orange
XPST4057	Twistlock Frame to attach B30-24 VESN with 860 Liter front tank
XPST4138	LS valve (678326) installed in service compartment
XPST4099	Vent line for FS tank extended to the rear
XPST4000	Standard galvanic parts painted (step, rail parts, tank attachment parts)
XPST4027	Spreader adjusted for airport usage
XPST4407	Big-Bag hooks inside hopper

#### Technical Data Spreader

Road speed signal	Electronically from tachometer
Vehicle voltage	24 Volt
Full loaded platform height	1710 mm
s.g. solid material	1.20
s.g. liquid material	1.15
Mass empty	952 kg
Mass full	6012 kg.
Turning off brine pump running dry	Yes
Program operating system	International metric
Direct plough signal	Yes
Spreading width	3-12 Meter
Rear work light colour	Red working light
Mat. adjustment solid	0,55 kg / Liter
Mat. adjustment liquid	1,60 kg / Liter

## Contact

Artur Maciejewski  
Used Machines Sales Manager  
Mobile: +48600397036  
Phone: +48 32 889 02 91  
E-Mail: artur.maciejewski@aebi-schmidt.com



www.aebi-schmidt.com  
© Aebi Schmidt Group  
Aebi Schmidt Holding AG  
CH-8050 Zurich

All rights reserved. Technical data is subject to change. Illustrations are not binding. Errors and amendments excepted.

Document created on 08.03.2023

